



hose \ `hōz \ n : a flexible tube for conveying gases or fluids

tubing \ `t(y)u-bing \ n : a stiff material in the form of a tube used for conveying gases or fluids

Do you use a garden tube?

The answer to the question of whether to call it a tube or a hose rests on a fine line, one many people have gotten tangled up in. In both definitions it clearly states that a tube and a hose are used for conveying fluids, yet sometimes one word seems to fit the situation (and the application) better than the other. So remember...

It's a hose when it's flexible and a tube when it's not.

Clippard offers a variety of miniature hose and tubing from copper and nylon tubing to flexible urethane, vinyl and Buna-N hose. The chart below lists these products and their available colors and lengths.



□	-	□	-	□	-	□	
<p>Hose or Tubing Type</p> <p>NYT1 - Single Nylon Tubing</p> <p>VYH1 - Single Vinyl Hose</p> <p>VYH2 - Dual Vinyl Hose</p> <p>URH1 - Single 85 Duro. Urethane Hose</p> <p>URH2 - Dual 85 Duro. Urethane Hose</p> <p>URH8 - Ribbon 85 Duro. Urethane Hose</p> <p>URT1 - Single 95 Duro. Urethane Tubing</p> <p>PET1 - Single Polyethylene Tubing</p>		<p>Size: O.D. x I.D.</p> <p>0402 - 1/8" x 1/16"</p> <p>0403 - 1/8" x 3/32"</p> <p>0503 - 5/32" x 3/32"</p> <p>0804 - 1/4" x 1/8"</p> <p>0805 - 1/4" x 0.160"</p> <p>1208 - 3/8" x 1/4"</p> <p>Metric Sizes</p> <p>0604M - 6 mm x 4 mm</p>		<p>Colors: Solid</p> <p>BLS - blue</p> <p>BKS - black</p> <p>BRS - brown</p> <p>GNS - green</p> <p>GYS - gray</p> <p>NAS - natural</p> <p>ORS - orange</p> <p>RDS - red</p> <p>WHS - white</p> <p>YLS - yellow</p> <p>01S - gray/black (dual only)</p>		<p>Translucent</p> <p>BLT - blue</p> <p>CLT - clear</p> <p>GNT - green</p> <p>PUT - purple</p> <p>ORT - orange</p> <p>RDT - red</p> <p>YLT - yellow</p> <p>02T - BLT/GNT/GYS/ORT/PUT/RDT/WHS/YLT (ribbon only)</p>	<p>Available Lengths</p> <p>050 - 50 ft roll</p> <p>500 - 500 ft spool</p>

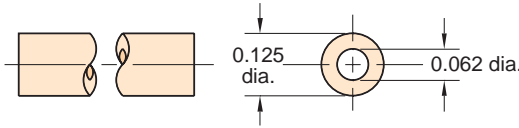
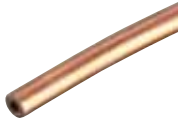
This chart is to be used as an explanation of our ordering system. See individual listings following this page for sizes and colors available.



CLIPPARD HOSE & TUBING

3811-1-RL

1/8" O.D. Copper Tubing



Material: High pressure copper

Working Pressures: to 2,500 psig

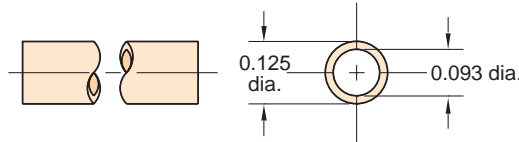
Static Burst Pressure: over 10,000 psig

Lengths Available: 50 feet

Use With: Ferrule tubing connectors #'s: 3810-1
3810-2
11923

NYT1-0403-CLT-□

3/32" I.D. Nylon Tubing
(Former Part No. 3814-2)



Material: Semi-flexible nylon tubing

Color: Clear / Translucent

Working Range: to 250 psig

Static Burst Pressure: Approx. 1,000 psig

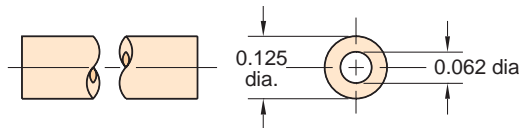
Use With: Ferrule tubing connectors: 11923
3810-1
3810-2

Forming: May be formed into sharp corners with heat

Lengths Available: 50 and 500 feet

VYH1-0402-CLT-□

1/16" I.D. Vinyl Hose
(Former Part No. 3814-5)



Note:
Consult factory for custom colors

Type: Flexible, durable vinyl plastic hose

Working Range: 0 to 105 psig at 70°F maximum 60 psig at 80°F or above (max. temp. 100°F)

Use With: Hose fittings: 11752-2 and clamp 5000-4

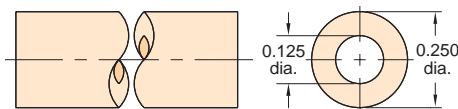
Bend Radius: 3x hose dia.

Color: Translucent: Clear

Lengths Available: 50 and 500 feet

VYH1-0804-CLT-□

1/8" I.D. Vinyl Hose
(Former Part No. 3814-1)



Note:
Consult factory for custom colors

Working Range: 0 to 105 psig at 70°F maximum 60 psig at 80°F or above (max. temp. 100°F)

Use With: Hose fittings: 11752-1, 11752-3 and 11924
Hose clamps: 5000-2

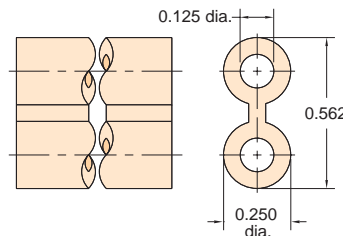
Bend Radius: 3x hose dia.

Color: Translucent: Clear

Lengths Available: 50 and 500 feet

VYH2-0804-GYS-□

1/8" I.D. Twin Vinyl Hose
(Former Part No. 3814-3)



Type: Flexible, durable vinyl plastic hose, but two hoses molded together, one side has rib entire length for identification

Color: Solid: Gray/Gray

Use Clamp: 5000-1

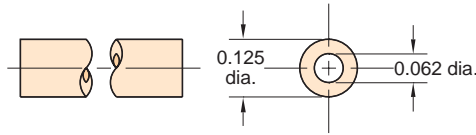
Working Range: 0 to 150 psig at 70°F maximum 60 psig at 80°F or above (max. temp. 100°F)

Use: Ideal for feeding supply in on one line and out on the other, reduces labor; makes neat assembly; may be parted with any sharp cutting edge

Lengths Available: 50 and 500 feet

URH1-0402-□-□

1/16" I.D. Polyurethane Hose
(Former Part No. 3814-7)



Working Range: 0 to 105 psig at 100°F Maximum 120°F

Static Burst Pressure: Over 500 psig at 70°F

Color: Solid: Black, brown, white, gray, orange
Translucent: Clear, blue, green, red, yellow

Lengths Available: 50 and 500 feet

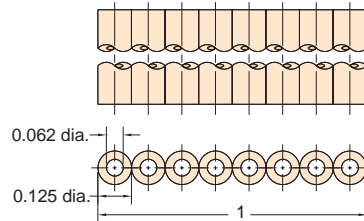
Note: In normal application hose clamps are not required with hose when used with Clippard hose barb fittings

Note:

Specify color on order, and use full product number (including code letters for color) as shown in Price List. If no color is specified, clear will be furnished.

URH8-0402-02T-050

1/16" I.D. Polyurethane Ribbon Hose
(Former Part No. 3814-9)



Type: Flexible, durable urethane hose

Working Range: 0 to 105 psig at 100°F maximum 120°F

Static Burst Pressure: Over 500 psig at 70°F

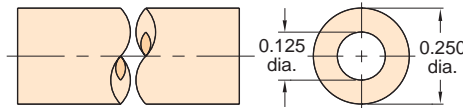
Color: Solid: Gray, white
Translucent: Blue, green, orange, purple, red, yellow

Lengths Available: 50 feet

Note: In normal application, hose clamps are not required with hose when used with Clippard hose barb fittings

URH1-0804-□-□

1/8" I.D. Polyurethane Hose
(Former Part No. 3814-6)



Working Range: 0 to 105 psig at 100°F Maximum 120°F

Static Burst Pressure: Approximately 425 psig at 70°F

Color: Solid: Black, brown, white, gray, orange
Translucent: Clear, blue, green, red, yellow

Lengths Available: 50 and 500 feet

Bend Radius: 2x hose dia.

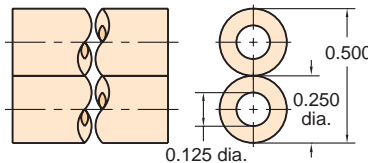
Note: In normal application hose clamps are not required with hose when used with Clippard hose barb fittings

Note:

Specify color on order, and use full product number (including code letters for color) as shown in Price List. If no color is specified, clear will be furnished.

URH2-0804-01S-□

Twin 1/8" I.D. Polyurethane Hose
(Former Part No. 3814-13)



Working Range: 0 to 105 psig at 100°F

Static Burst Pressure: Approximately 425 psig at 70°F

Color: Solid: Gray and black combination

Lengths Available: 50 and 500 feet

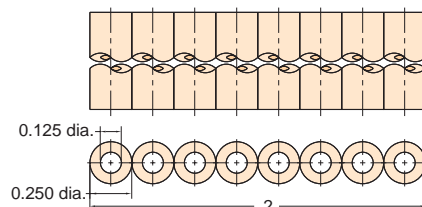
Bend Radius: 2x hose dia.

Use: Ideal for feeding supply in on one line and out on the other; reduces labor; makes neat assembly; may be parted with any sharp cutting edge

Note: In normal application, hose clamps are not required with 3814-13 hose when used with Clippard hose barb fittings

URH8-0804-02T-050

1/8" I.D. Polyurethane Ribbon Hose
(Former Part No. 3814-12)



Type: Flexible, durable urethane hose

Working Range: 0 to 105 psig at 100°F maximum 120°F

Static Burst Pressure: Over 500 psig at 70°F

Color: Solid: Gray, white
Translucent: Blue, green, orange, purple, red, yellow

Lengths Available: 50 feet

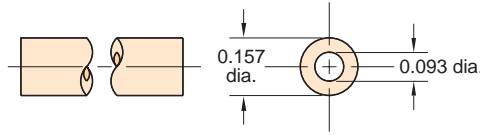
Note: In normal application, hose clamps are not required with hose when used with Clippard hose barb fittings



CLIPPARD HOSE & TUBING

URT1-0503-□-□

5/32" O.D. 95D Urethane Tubing
Flexible, durable ether based tubing



Working Range: 0 to 105 psig at 100°F Maximum 120°F

Static Burst Pressure: Over 500 psig at 70°F

Color: Solid: Black, gray, orange, red, white
Translucent: Blue, clear, green, red, yellow

Lengths Available: 50 and 500 feet

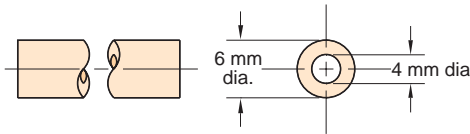
Note: Designed for use with push-in fittings.

Note:

Specify color on order, and use full product number (including code letters for color) as shown in Price List. If no color is specified, clear will be furnished.

URT1-0604M-□-□

6 mm O.D. 95D Urethane Tubing
Flexible, durable ether based tubing



Working Range: 0 to 105 psig at 100°F Maximum 120°F

Static Burst Pressure: Over 450 psig at 70°F

Color: Solid: Black
Translucent: Blue, clear, green, red

Lengths Available: 50 and 500 feet

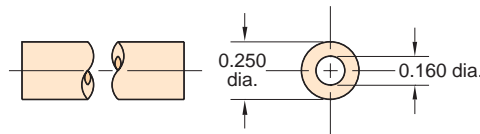
Note: Designed for use with push-in fittings.

Note:

Specify color on order, and use full product number (including code letters for color) as shown in Price List. If no color is specified, clear will be furnished.

URT1-0805-□-□

1/4" O.D. 95D Urethane Tubing
Flexible, durable ether based tubing



Working Range: 0 to 105 psig at 100°F Maximum 120°F

Static Burst Pressure: Over 450 psig at 70°F

Color: Solid: Black, gray, orange, red, white
Translucent: Blue, clear, green, red, yellow

Lengths Available: 50 and 500 feet

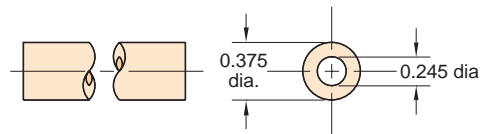
Note: Designed for use with push-in fittings.

Note:

Specify color on order, and use full product number (including code letters for color) as shown in Price List. If no color is specified, clear will be furnished.

URT1-1208-□-□

3/8" O.D. 95D Urethane Tubing
Flexible, durable ether based tubing



Working Range: 0 to 105 psig at 100°F Maximum 120°F

Static Burst Pressure: Over 440 psig at 75°F

Color: Solid: Black
Translucent: Blue, clear, green, red

Lengths Available: 50 and 500 feet

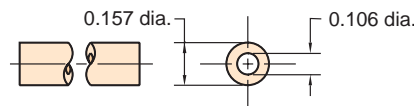
Note: Designed for use with push-in fittings.

Note:

Specify color on order, and use full product number (including code letters for color) as shown in Price List. If no color is specified, clear will be furnished.

PET1-0503-□-□

5/32" O.D. Polyethylene Tubing
Linear low density tubing



Working Range: 0 to 105 psig at 100°F Maximum 120°F

Static Burst Pressure: Over 540 psig at 75°F

Colors: Solid: Black or Natural

Lengths Available: 50 and 500 feet

Bend Radius: 1/2"

Note: Designed for use with push-in fittings.

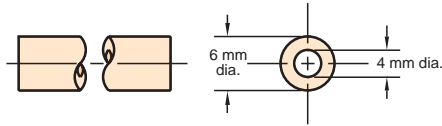
Note:

Specify color on order, and use full product number (including code letters for color) as shown in Price List. If no color is specified, natural will be furnished.

PET1-0604M-□-□



6 mm O.D. Polyethylene Tubing
Linear low density tubing



Working Range: 0 to 105 psig at 100°F Maximum 120°F

Static Burst Pressure: Approximately 560 psig at 75°F

Colors: Solid: Black or Natural

Lengths Available: 50 and 500 feet

Bend Radius: 1 1/4"

Note: Designed for use with push-in fittings

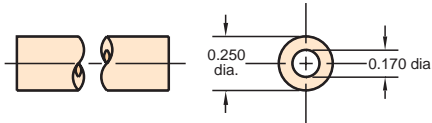
Note:

Specify color on order, and use full product number (including code letters for color) as shown in Price List. If no color is specified, natural will be furnished.

PET1-0805-□-□



1/4" O.D. Polyethylene Tubing
Linear low density tubing



Working Range: 0 to 105 psig at 100°F Maximum 120°F

Static Burst Pressure: Approximately 480 psig at 75°F

Colors: Solid: Black or Natural

Lengths Available: 50 and 500 feet

Bend Radius: 1 1/4"

Note: Designed for use with push-in fittings

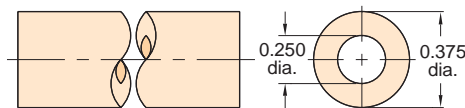
Note:

Specify color on order, and use full product number (including code letters for color) as shown in Price List. If no color is specified, natural will be furnished.

PET1-1208-□-□



3/8" O.D. Polyethylene Tubing
Linear low density tubing



Working Range: 0 to 105 psig at 100°F Maximum 120°F

Static Burst Pressure: Approximately 600 psig at 75°F

Colors: Solid: Black or Natural

Lengths Available: 50 and 500 feet

Bend Radius: 2"

Note: Designed for use with push-in fittings

Note:

Specify color on order, and use full product number (including code letters for color) as shown in Price List. If no color is specified, natural will be furnished.



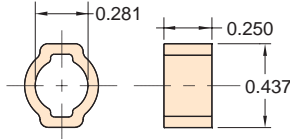
CLIPPARD CLAMPS

5000-1



Quick Set Hose Clamps

Type: Zinc plated steel
Use: 5000-1 with Buna N hose
 twin vinyl hose

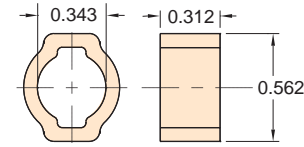


5000-1A



Quick Set Hose Clamps

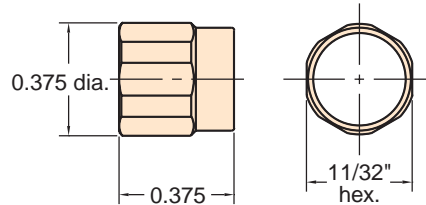
Type: Zinc plated steel
Use: 5000-1A with braided hose



5000-2



Reusable Hose Clamps



Material: Brass, self-threading, reusable

Use With: 11765 Buna-N hose VYH1-0804-CLT vinyl hose and Clippard hose fittings

Installation: Slip sleeve over hose, push onto fitting, then screw into place; tighten with wrench

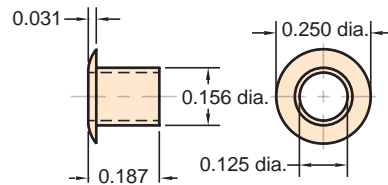
Options: (-NP)



5000-4



Press-On Hose Clamp



Material: Brass, press-on hose clamp

Use: for VYH1-0402-CLT hose 1/16" I.D. vinyl

Installation: Simply place hose clamp over hose with flange end out; then press hose partially onto fitting, then slide clamp back toward fitting to secure

Options: (-NP)



Polyethylene vs Vinyl vs Polyurethane

Polyurethane offers a wider range of chemical compatibility than Vinyl, it may be used at much higher temperatures and clamps are not needed when used with barb fittings. Linear low density polyethylene offers a lower cost alternative to polyurethane and superior environmental stress crack resistance over standard polyethylene. Both polyurethane and polyethylene are FDA approved.

Typical Hose & Tubing Bend Radii

When using hose or tubing, care should always be taken to avoid sharp bends to prevent compressing the inside diameter of the hose or tubing and restricting flow. For extremely close connections, allow a short loop of hose to avoid crimping.

Clippard Hose or Tubing	I.D.	O.D.	Min. Bend Radius
3811-1 Copper Tube	1/16"	1/8"	3 x dia.
NYT1-XXX Nylon Tubing	3/32"	1/8"	3 x dia.
VYH1-XXX Vinyl Hose	1/16"	1/8"	3 x dia.
VYH1-XXX Vinyl Hose	1/8"	1/4"	2 x dia.
VYH2-XXX Dual Vinyl Hose	1/8"	1/4"	2 x dia.
URH1-XXX 85 Duro. Urethane Hose	1/16"	1/8"	2 x dia.
URH8-XXX Ribbon 85 Duro. Urethane	1/16"	1/8"	-
URH1-XXX 85 Duro. Urethane Hose	1/8"	1/4"	2 x dia.
URH2-XXX Dual 85 Duro. Urethane	1/8"	1/4"	3 x dia.
URH8-0804-XXX Ribbon 85 Duro. Urethane	1/8"	1/4"	-
URT1-0503-XXX 95 Duro. Urethane Tubing	3/32"	5/32"	3 x dia.
URT1-0604M-XXX 95 Duro. Urethane Tubing	4 mm	6 mm	2 x dia.
URT1-0805-XXX 95 Duro. Urethane Tubing	0.160"	1/4"	2 x dia.
URT1-1208-XXX 95 Duro. Urethane Tubing	0.245"	3/8"	3 x dia.
PET1-0503-XXX Polyethylene Tubing	0.106"	5/32"	3 x dia.
PET1-0604M-XXX Polyethylene Tubing	4 mm	6 mm	5 x dia.
PET1-0805-XXX Polyethylene Tubing	0.170"	1/4"	5 x dia.
PET1-1208-XXX Polyethylene Tubing	1/4"	3/8"	5 x dia.